



NEWINGTON
LONDON

1 Bedrooms

Apartment

Located in London

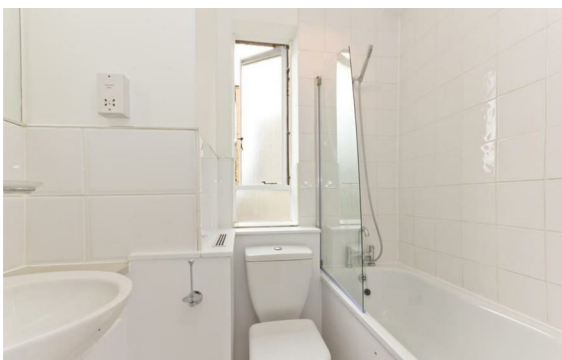
£545 Per Month



info@newingtonstates.com

<http://www.newingtonstates.com>

020 7724 2233



A beautifully presented one-bedroom apartment in a prime secure portered block in the heart of St Johns Wood with wonderfully generous storage and just a short walk to St Johns Wood tube station (Jubilee Line), a host of well connected buses and St Johns Wood High Street which is well renowned for its fantastic shops, restaurants and cafes. Regents Park is also a short walk from this flat and the block has a beautiful well maintained communal garden.

Property comprises large bedroom, bathroom, bright and spacious reception with fully fitted kitchen as well as ample storage throughout.

EPC rating: C

Energy Efficiency Rating: C

Agents Note: Whilst every care has been taken to prepare these particulars, they are for guidance purposes only. All measurements are approximate and are for general guidance purposes only and whilst every care has been taken to ensure their accuracy, they should not be relied upon and potential buyers/tenants are advised to recheck the measurements.

NEWINGTON LONDON

60 Upper Montagu Street

London

W1H 1SN

020 7724 2233

info@newingtonstates.com

<http://www.newingtonstates.com>